

CUSTOMER TECHNICAL MEMO # 285

Subject HunterEvo SG 101.6mm,150mm & DG 150mm Manufacturing drawings for Structurally Glazed Mullions **Date:** 16th February 2017

Author: Product Development Team

We are very pleased to advise we have prepared new manufacturing pages for the preparation of structurally glazed Mullions, along with Head and Transom preparations when using structurally glazed Mullions for Hunter Evo Single Glazed 101.6mm, 150mm and Double Glazed 150mm framing options.

Please find attached all new relevant pages to be replaced or added to your existing Tech Manuals. Please ensure your printer is set to double sided printing to assist in updating your Tech manuals.

Hunter Evo 101.6mm Single Glazed Flush Glazed

Contents Page: Manufacturing Drawings - Text added
Page 1.0: Tech Manual Release notes updated
Page 3.6.27 to 3.6.32: Structural Mullion Manufacturing Drawings added

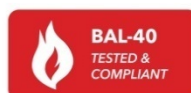
Hunter Evo 150mm Single Glazed Flush Glazed

Contents Page: Manufacturing Drawings - Text added
Page 1.0: Tech Manual Release notes updated
Page 3.6.27 to 3.6.32: Structural Mullion Manufacturing Drawings added

Hunter Evo 150mm Double Glazed Flush Glazed

Contents Page: Manufacturing Drawings - Text added
Page 1.0: Tech Manual Release notes updated
Page 3.6.25 to 3.6.32: Structural Mullion Manufacturing Drawings added

Should you have any questions please do not hesitate to contact your local Alspec Area Manager or Sales Office.



ALSPEC ALUMINIUM SYSTEMS

TECHNICAL MANUAL

HUNTER EVO 101.6mm SG FLUSH GLAZED

CONTENTS Continued

- 3.6.25 Frame preparation – Sill / Transom Drainage
- 3.6.26 Split Mullion Assy and Transom Seal Details
- 3.6.27 Typical S.G. Male Structural Mullion preparation
- 3.6.28 Typical S.G. Female Structural Mullion preparation
- 3.6.29 Frame preparation – Head with Structural Mullions
- 3.6.30 Transom preparation with Structural Mullions
- 3.6.31 Transom preparation with Structural Mullions
- 3.6.32 Sill preparation with Structural Mullions

3.7 GLAZING DETAILS

- 3.7.1 Glazing details – Captive Glazing
- 3.7.2 Glazing details – with ECO123 Glazing Adaptor
- 3.7.3 Glazing details – Structural Glazed Mullion
- 3.7.4 Glazing details – Structural Glazed Transom

4.0 CARE AND MAINTENANCE

HUNTER
EVO

ALSPEC ALUMINIUM SYSTEMS

TECHNICAL MANUAL

HUNTER EVO 101.6mm SG FLUSH GLAZED

Section 1.0

TECHNICAL MANUAL RELEASE NOTES

This page is intended to record all changes to the **HUNTER EVO 101.6mm SG FLUSH GLAZED FRAMING** technical manual pages. It is therefore critical that all changes are recorded in the below AMENDMENTS box prior to release to our customers.

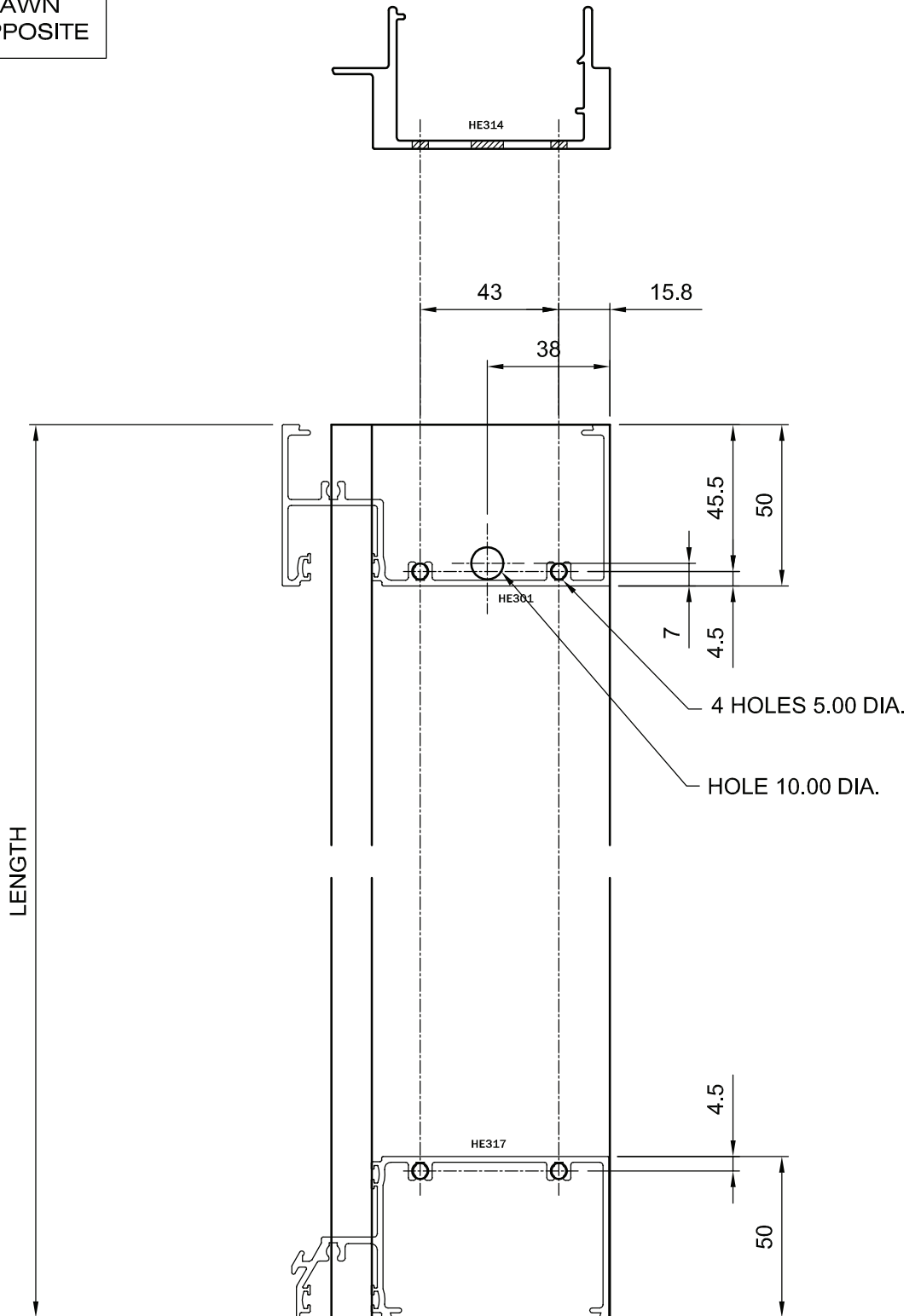
Changes or additions to this manual will be itemised with a brief description and date when the amendments were made.

It is important that a copy of the page be issued with the update and inserted as the first page in the customer's technical manual.

DATE	AMENDMENT DESCRIPTION	REMOVE PAGE	INSERT NEW PAGE
01 / 04 / 2013	<i>Technical manual initial release</i>	~	~
01 / 10 / 2014	<i>Manual reference number</i>	Cover	Cover
01 / 10 / 2014	<i>Contents - Loading tables</i>	Contents	Contents
01 / 10 / 2014	<i>Technical manual release notes</i>	1.0	1.0
01 / 10 / 2014	<i>Loading tables</i>	2.2.7 - 2.2.12	2.2.7 - 2.2.12
01 / 10 / 2014	<i>Acoustic test reports added</i>	2.3.10	2.3.10
01 / 10 / 2014	<i>Extrusions</i>	3.1.9 & 3.1.10	3.1.9 & 3.1.10
01 / 10 / 2014	<i>Accessories</i>	3.2.2 - 3.2.4	3.2.2 - 3.2.4
01 / 10 / 2014	<i>Details updated</i>	3.4.1 & 3.4.3	3.4.1 & 3.4.3
01 / 02 / 2017	<i>Contents page amended</i>	~	~
01 / 02 / 2017	<i>Technical manual release notes page amended</i>	1.0	1.0
01 / 02 / 2017	<i>Manufacturing drawings added</i>	~	3.6.27 - 3.6.32

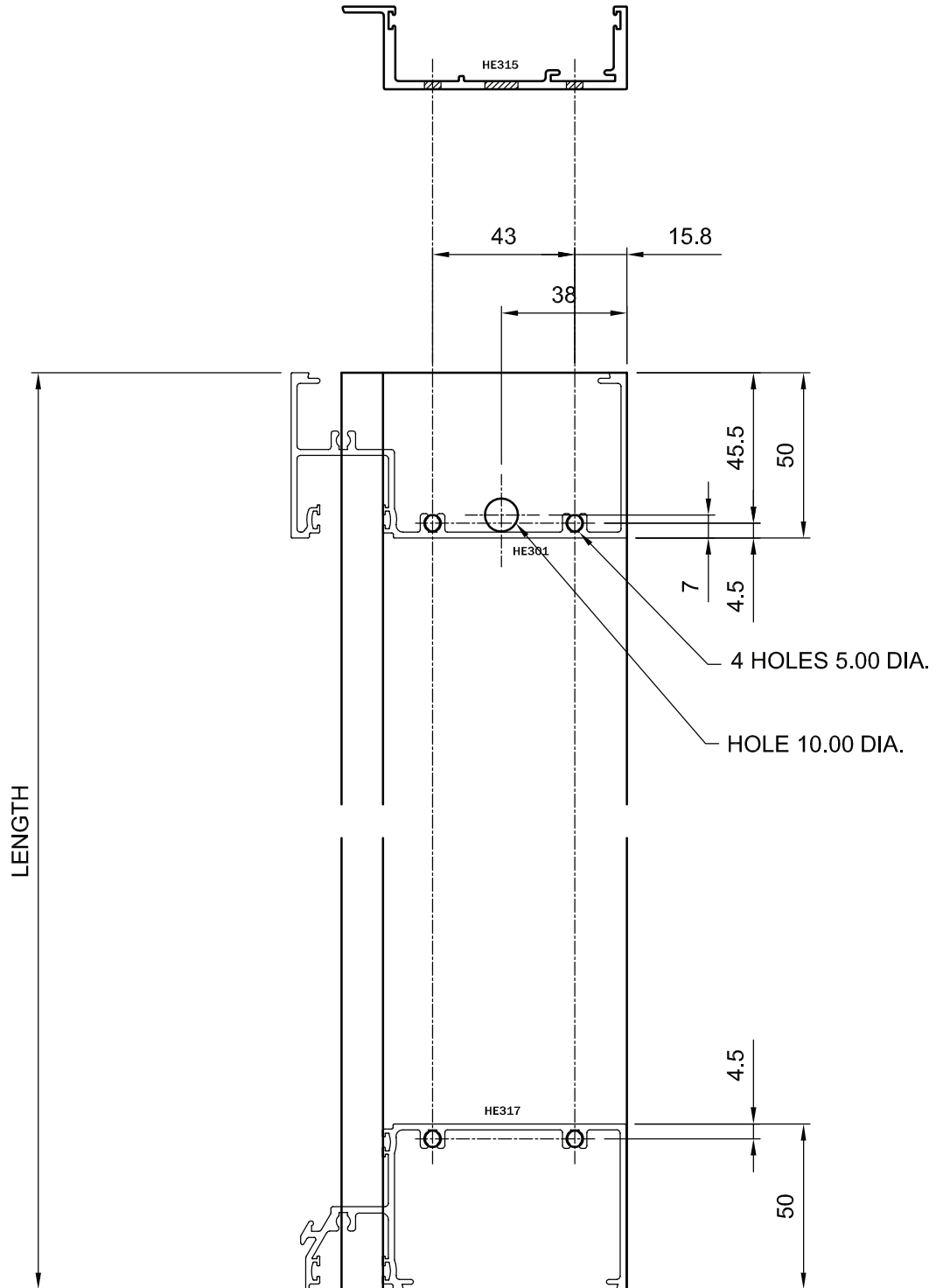
TYPICAL S.G. MALE STRUCTURAL MULLION PREPARATION

L.H. DRAWN
R.H. OPPOSITE

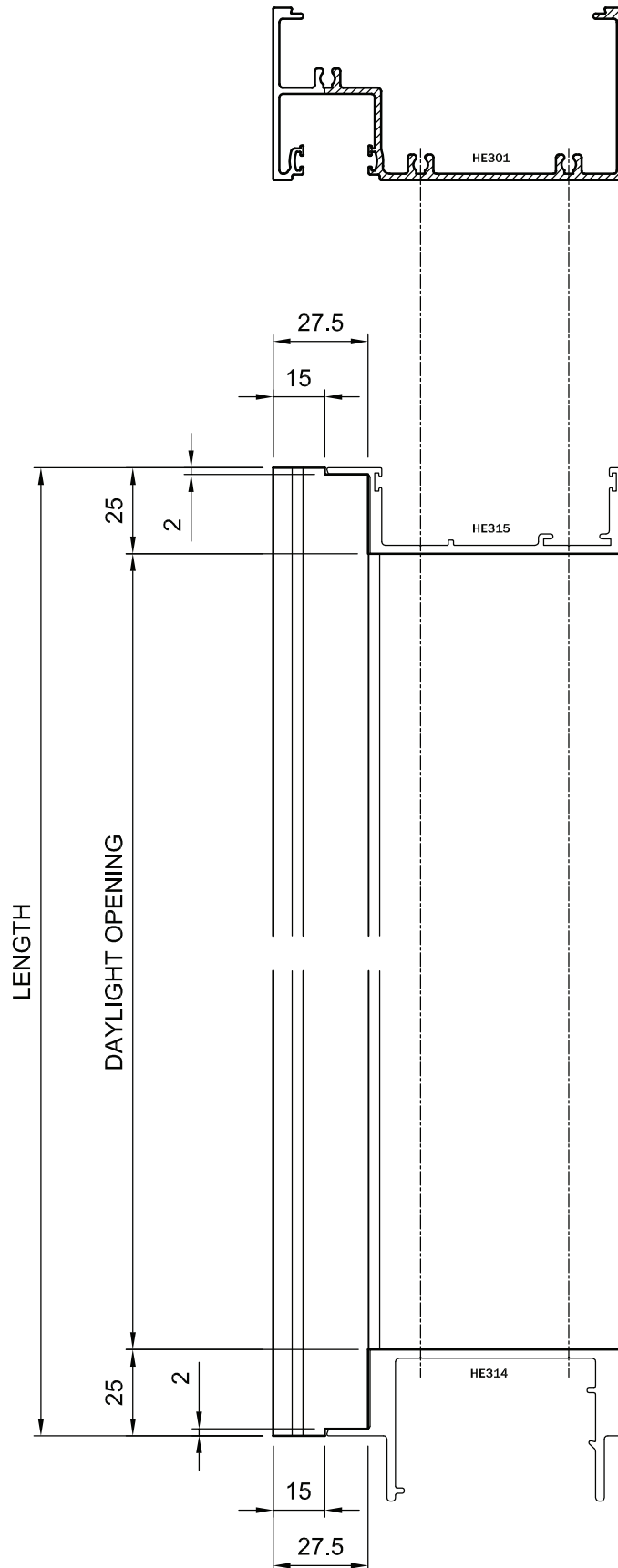


TYPICAL S.G. FEMALE STRUCTURAL MULLION PREPARATION

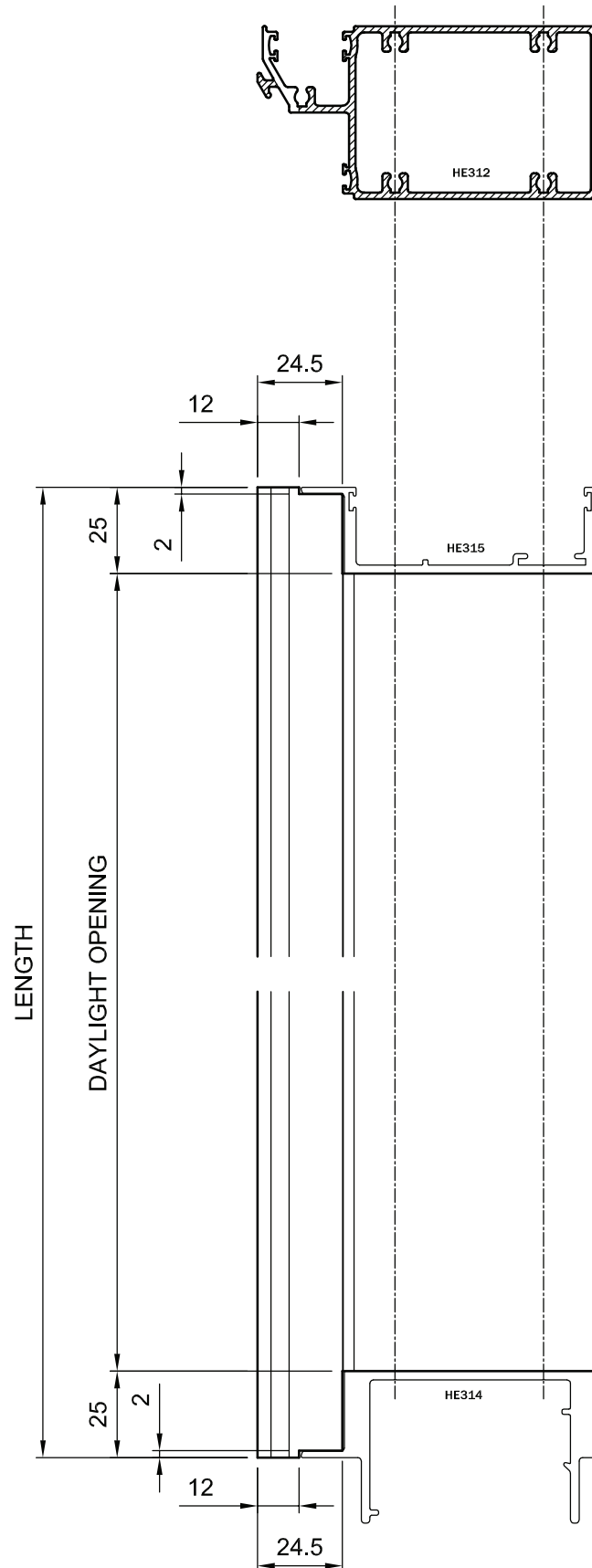
L.H. DRAWN
R.H. OPPOSITE



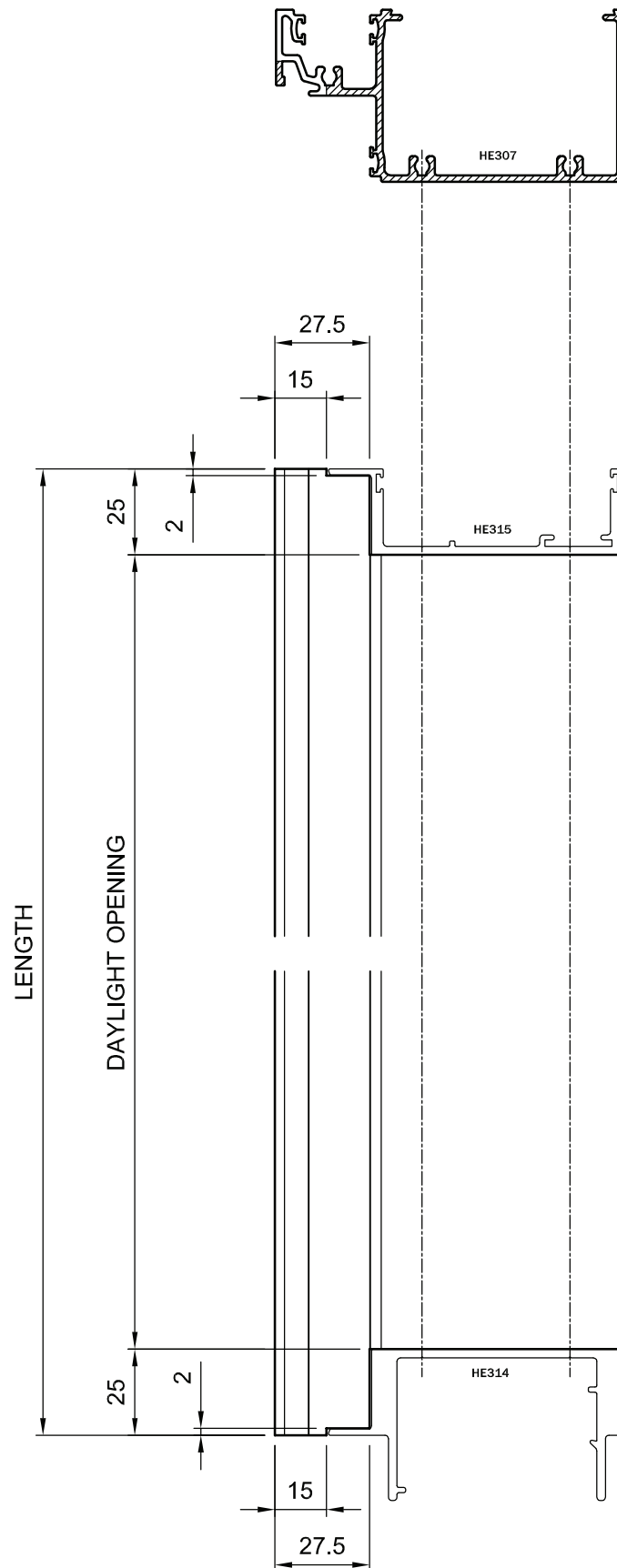
FRAME PREPARATION – HEAD WITH STRUCTURAL MULLIONS



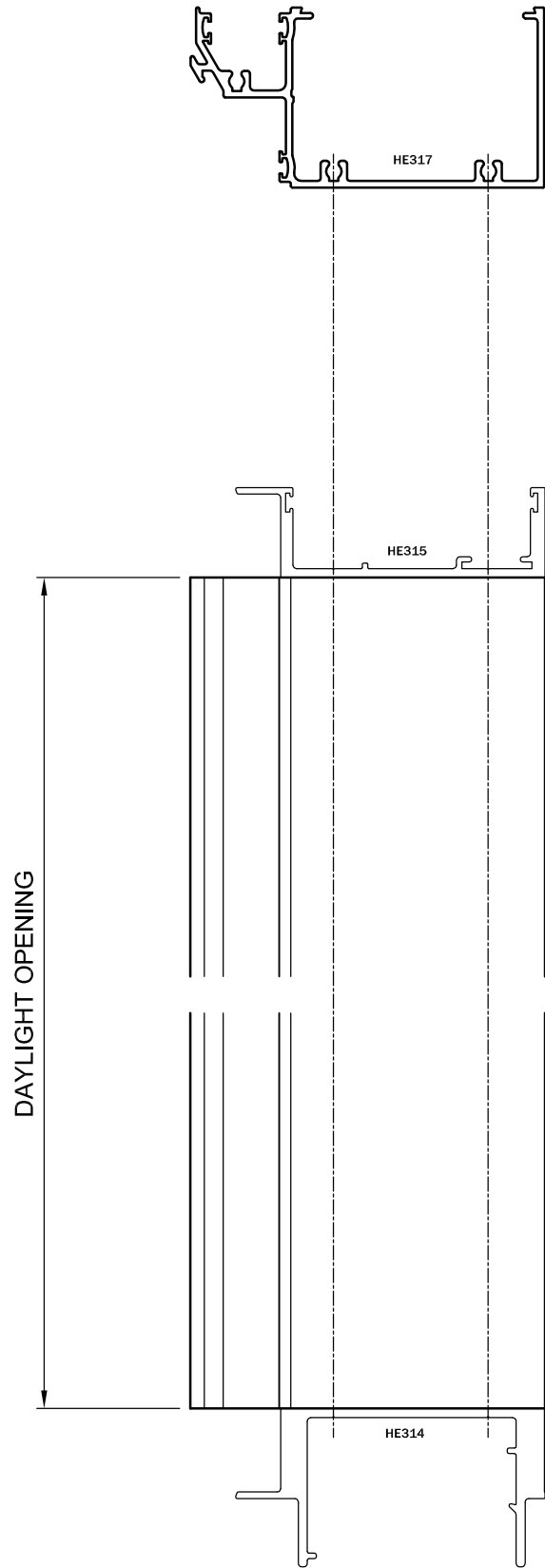
TRANSOM PREPARATION WITH STRUCTURAL MULLIONS



TRANSOM PREPARATION WITH STRUCTURAL MULLIONS



SILL PREPARATION WITH STRUCTURAL MULLIONS



ALSPEC ALUMINIUM SYSTEMS

TECHNICAL MANUAL

HUNTER EVO 150mm SG FLUSH GLAZED

CONTENTS Continued

- 3.6.19 Frame preparation – Internal Glaze
- 3.6.20 Frame preparation – Internal Glaze
- 3.6.21 Frame preparation – External Glaze
- 3.6.22 Frame preparation – External Glaze
- 3.6.23 Frame preparation – Sill / Transom Drainage
- 3.6.24 Split Mullion Assembly and Transom Sealing Detail
- 3.6.25 Frame preparation – Sill / Transom Drainage
- 3.6.26 Split Mullion Assy and Transom Sealing Detail
- 3.6.27 Typical S.G. Male Structural Mullion preparation
- 3.6.28 Typical S.G. Female Structural Mullion preparation
- 3.6.29 Frame preparation – Head with Structural Mullions
- 3.6.30 Transom preparation with Structural Mullions
- 3.6.31 Transom preparation with Structural Mullions
- 3.6.32 Sill preparation with Structural Mullions

3.7 GLAZING DETAILS

- 3.7.1 Glazing details – Captive Glazing
- 3.7.2 Glazing details – with ECO123 Glazing adaptor
- 3.7.3 Glazing details – Structural Glazed Mullion
- 3.7.4 Glazing details – Structural Glazed Transom
- 3.7.5 Glazing details – Inner Sashes

4.0 CARE AND MAINTENANCE

HUNTER
EVO

ALSPEC ALUMINIUM SYSTEMS

TECHNICAL MANUAL

HUNTER EVO 150mm SG FLUSH GLAZED

Section 1.0

TECHNICAL MANUAL RELEASE NOTES

This page is intended to record all changes to the **HUNTER EVO 150mm SG FLUSH GLAZED FRAMING** technical manual pages. It is therefore critical that all changes are recorded in the below AMENDMENTS box prior to release to our customers.

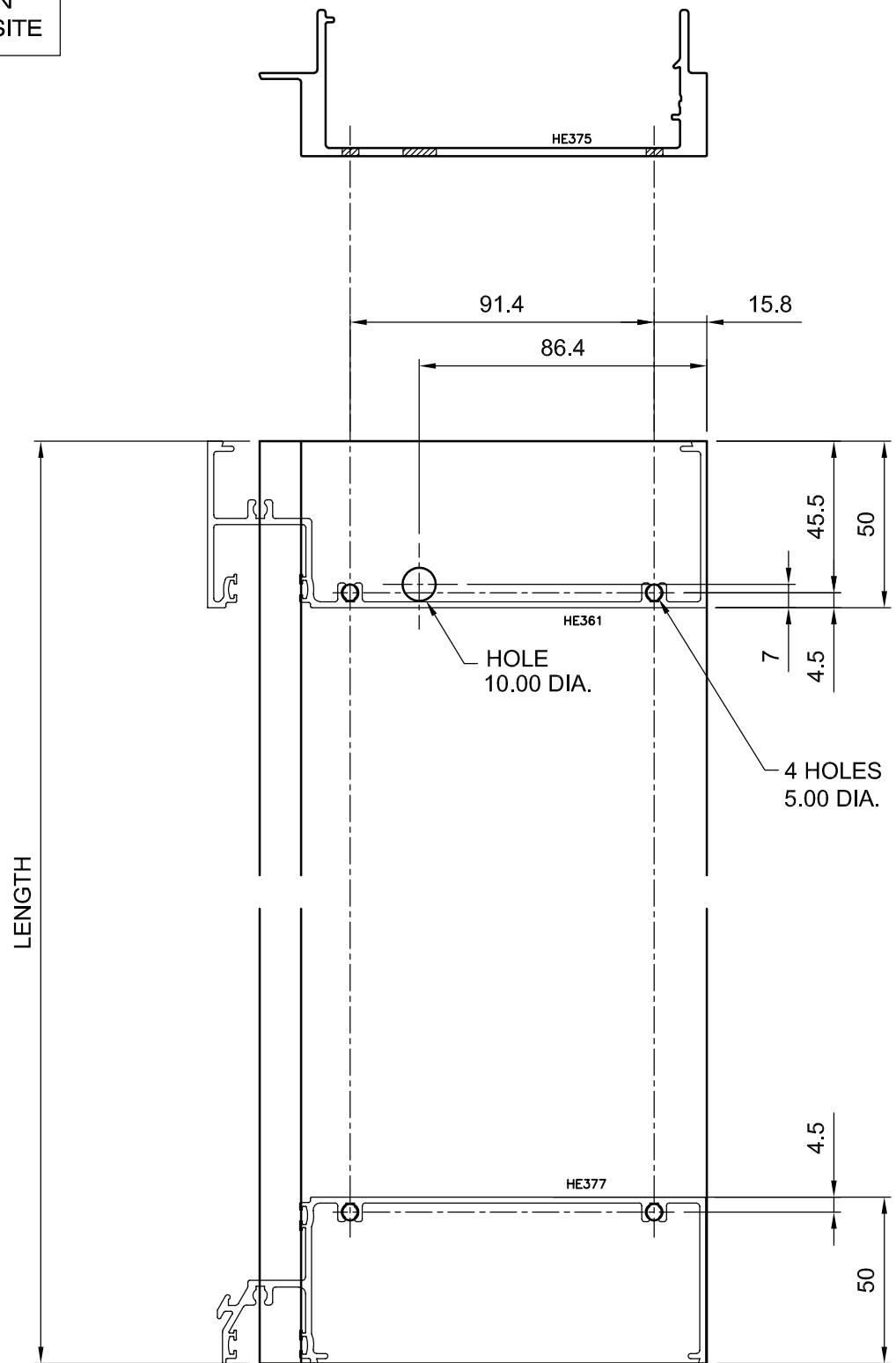
Changes or additions to this manual will be itemised with a brief description and date when the amendments were made.

It is important that a copy of the page be issued with the update and inserted as the first page in the customer's technical manual.

DATE	AMENDMENT DESCRIPTION	REMOVE PAGE	INSERT NEW PAGE
01 / 04 / 2013	<i>Technical manual initial release</i>	~	~
01 / 10 / 2014	<i>Manual reference number</i>	Cover	Cover
01 / 10 / 2014	<i>Tech manual release notes updated</i>	1.0	1.0
01 / 10 / 2014	<i>Specification updated</i>	2.1	2.1
01 / 10 / 2014	<i>Transom load tables updated</i>	2.2.7 to 2.2.12	2.2.7 to 2.2.12
01 / 10 / 2014	<i>Transom load tables added</i>	2.2.13 & 2.2.14	2.2.13 & 2.2.14
01 / 10 / 2014	<i>Backing gaskets and accessories updated</i>	3.2.2 - 3.2.4	3.2.2 - 3.2.4
01 / 10 / 2014	<i>Detail notes amended</i>	3.4.1 & 3.4.5	3.4.1 & 3.4.5
01 / 10 / 2014	<i>Glazing details updated</i>	3.7.1	3.7.1
01 / 02 / 2017	<i>Contents page amended</i>	~	~
01 / 02 / 2017	<i>Technical manual release notes page amended</i>	1.0	1.0
01 / 02 / 2017	<i>Manufacturing pages added</i>	~	3.6.27 - 3.6.32

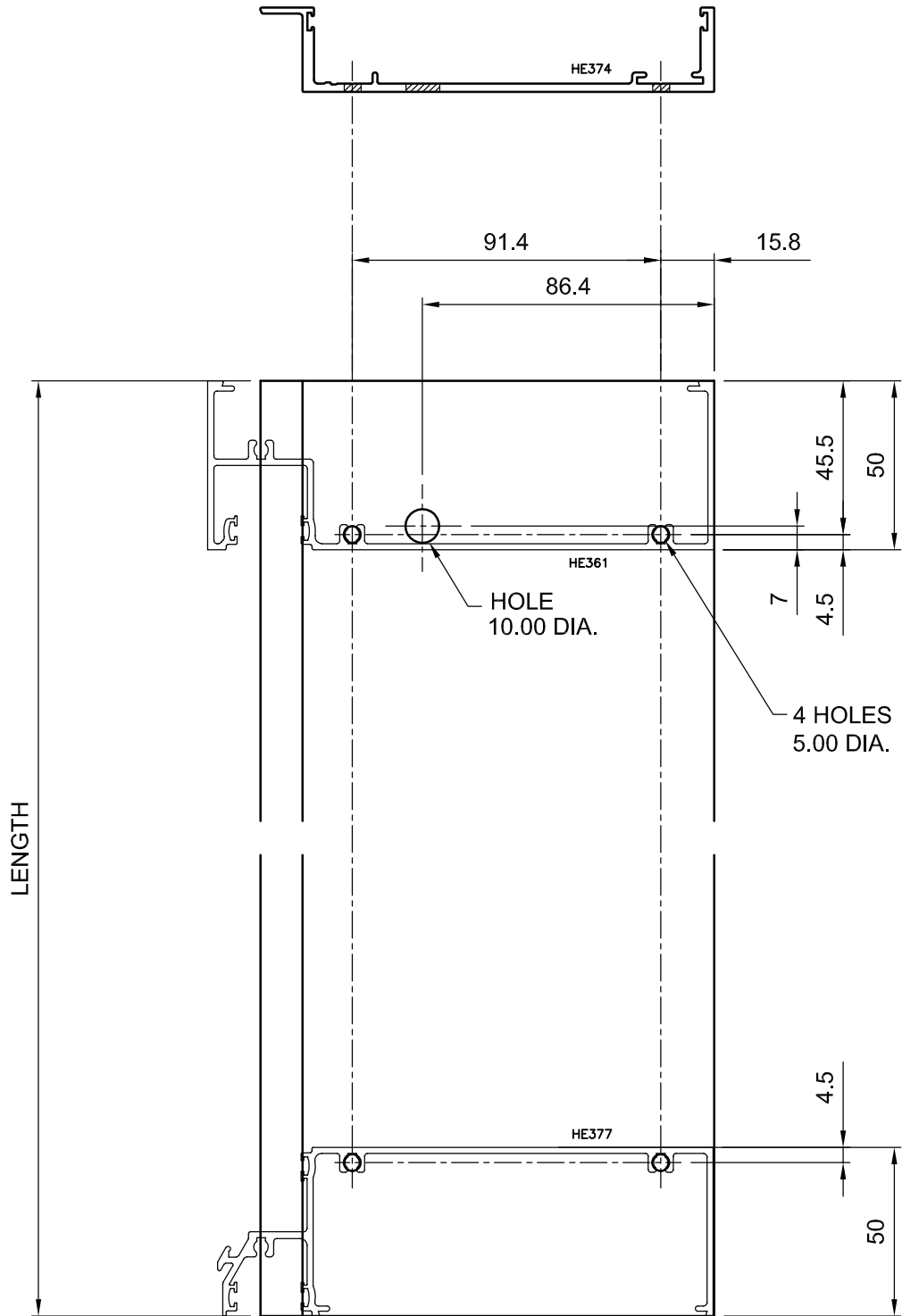
TYPICAL S.G. MALE STRUCTURAL MULLION PREPARATION

L.H. DRAWN
R.H. OPPOSITE

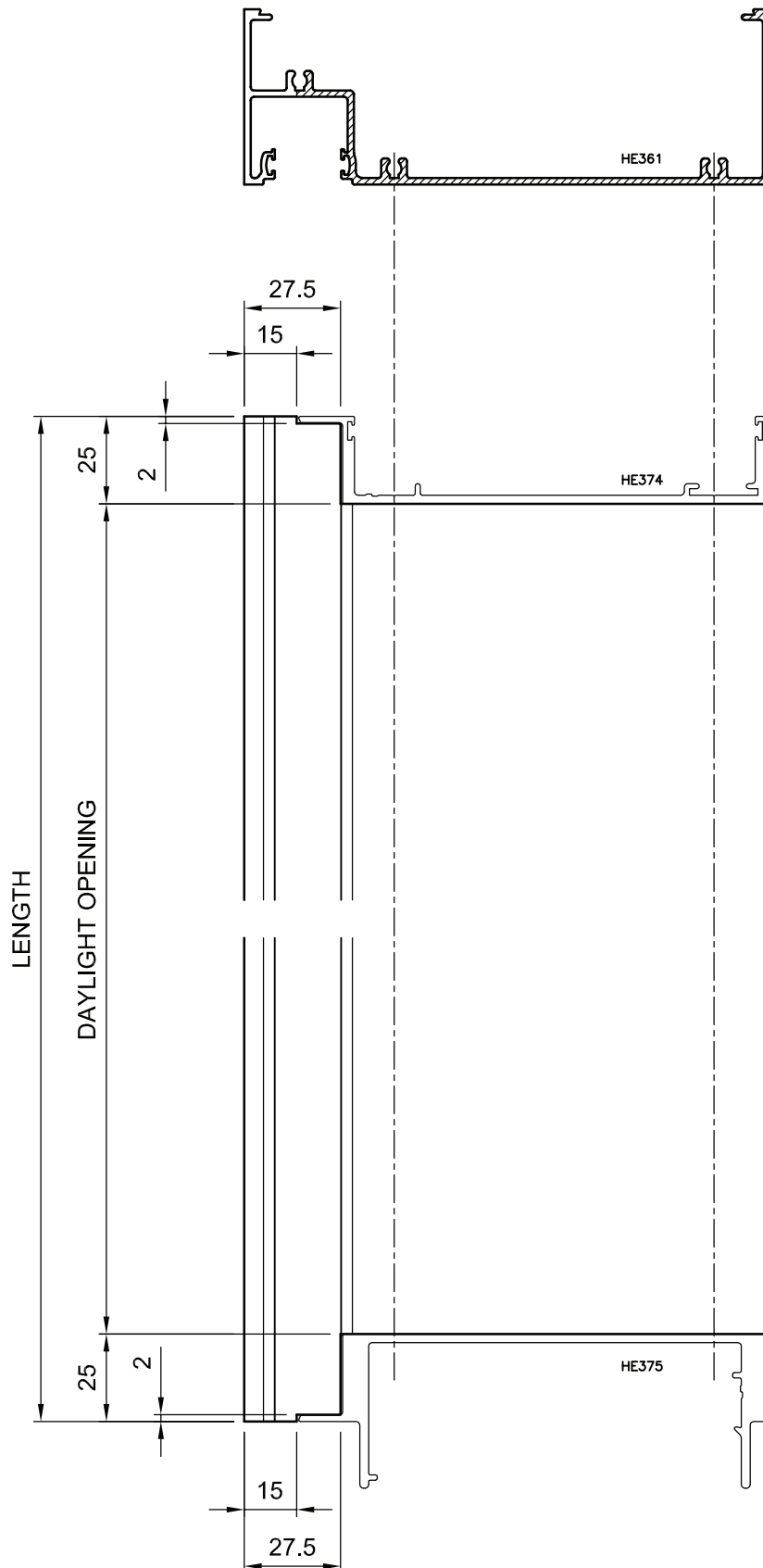


TYPICAL S.G. FEMALE STRUCTURAL MULLION PREPARATION

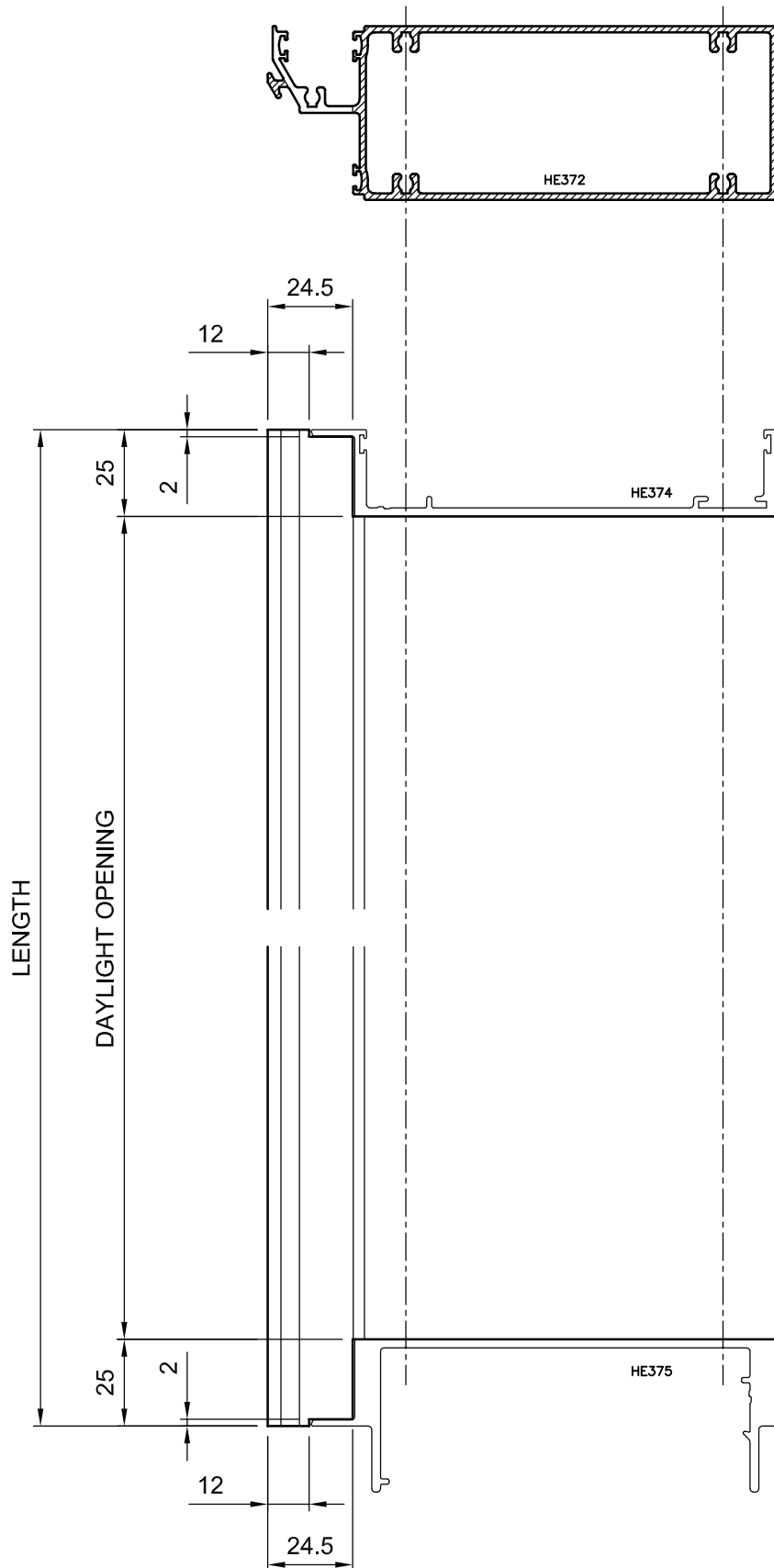
L.H. DRAWN
R.H. OPPOSITE



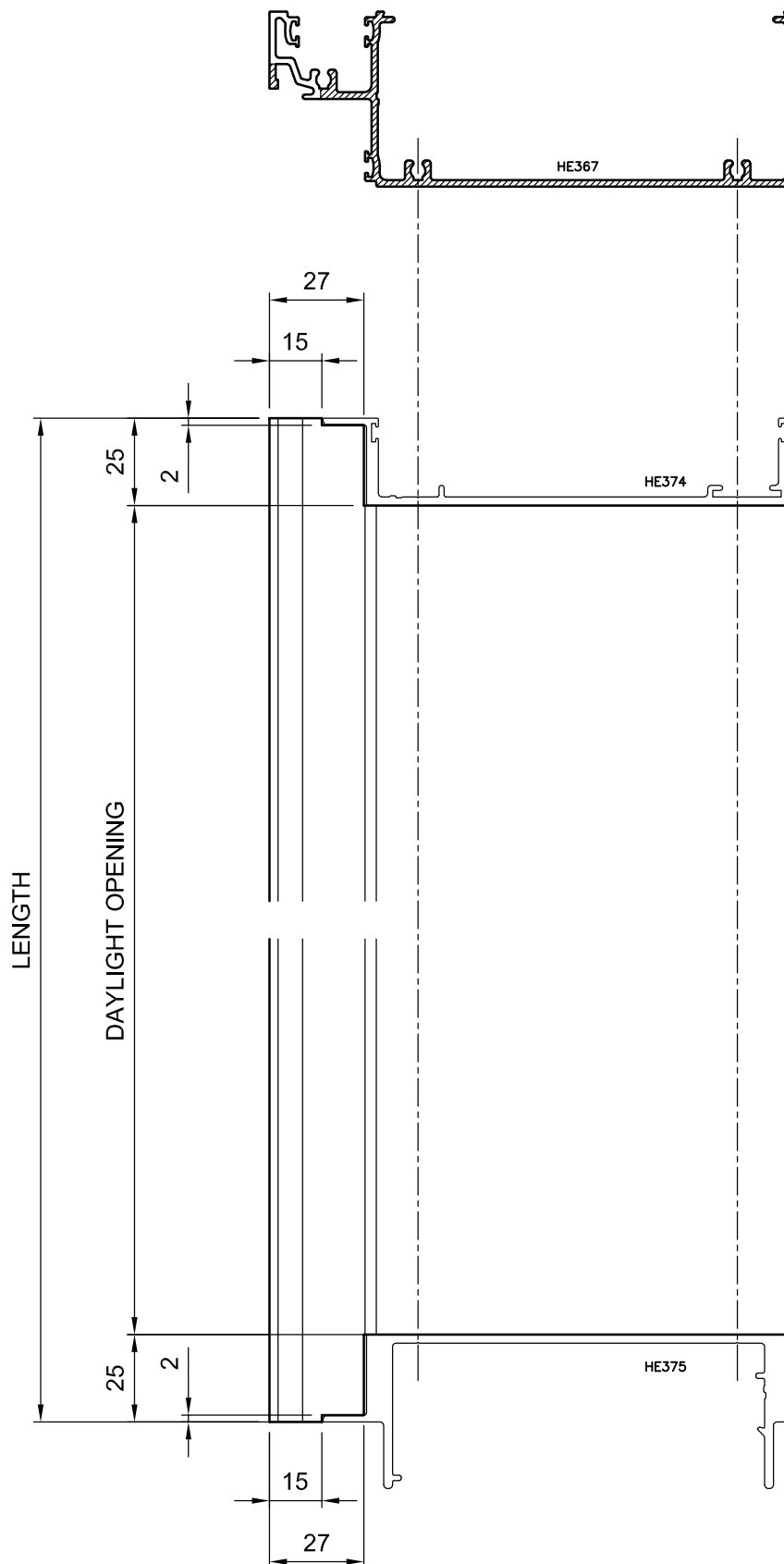
FRAME PREPARATION – HEAD WITH STRUCTURAL MULLIONS



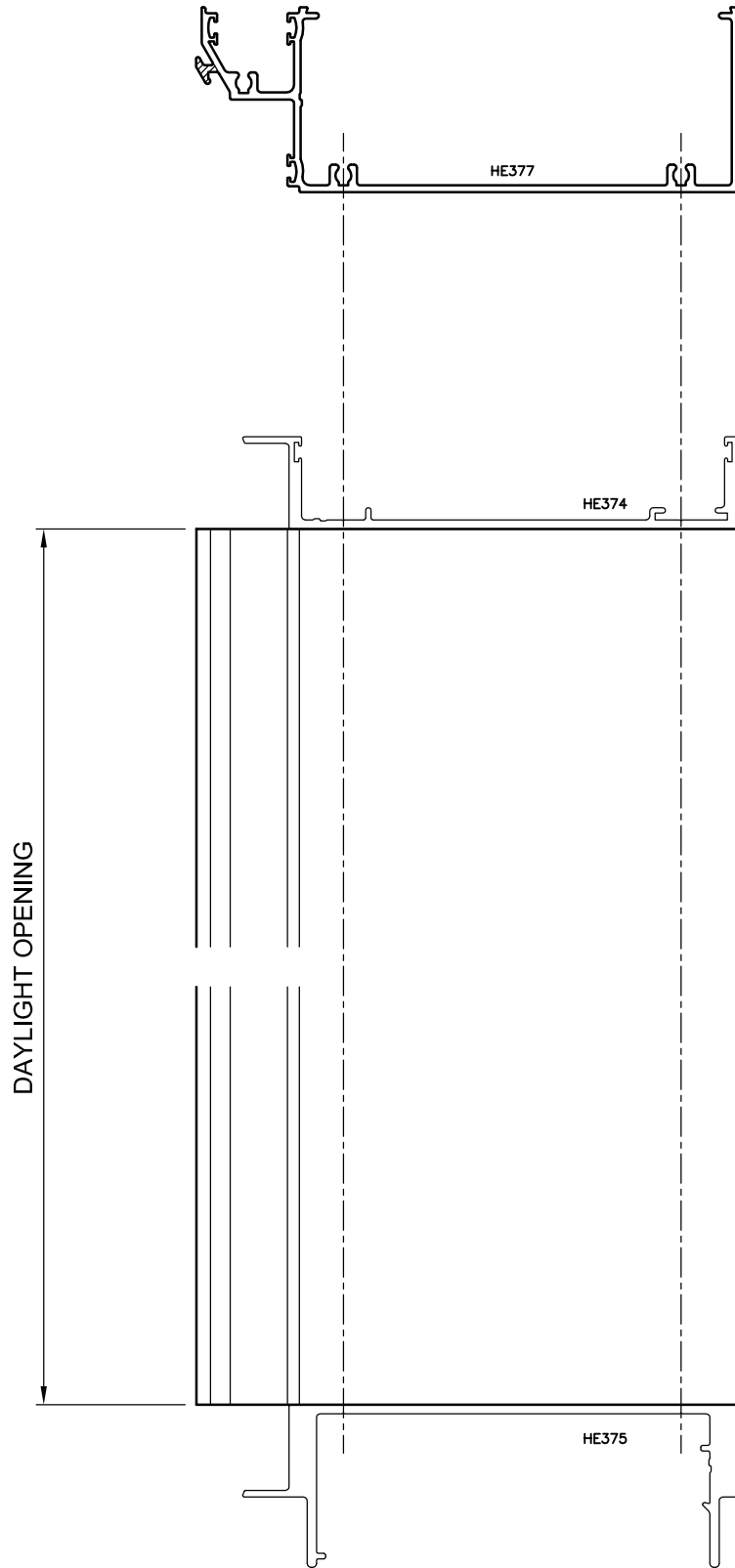
TRANSOM PREPARATION WITH STRUCTURAL MULLIONS



TRANSOM PREPARATION WITH STRUCTURAL MULLIONS



SILL PREPARATION WITH STRUCTURAL MULLIONS



ALSPEC ALUMINIUM SYSTEMS

TECHNICAL MANUAL

HUNTER EVO 150mm DG FLUSH GLAZED

CONTENTS Continued

- 3.6.25 Structural Mullion preparation
- 3.6.26 Frame preparation - Head with Structural Mullions
- 3.6.27 Transom preparation
- 3.6.28 Typical D.G. Male Structural Mullion preparation
- 3.6.29 Typical D.G. Female Structural Mullion preparation
- 3.6.30 Frame preparation - Head with D.G. Structural Mullions
- 3.6.31 Transom preparation - with D.G. Structural Mullions
- 3.6.32 Sill preparation - with D.G. Structural Mullions

3.7 GLAZING DETAILS

- 3.7.1 Glazing details - Captive Glazing
- 3.7.2 Glazing details - with ECO123 Glazing Adaptor
- 3.7.3 Glazing details - with HE430 Glazing adaptor
- 3.7.4 Glazing details - Structural Glaze Mullion
- 3.7.5 Glazing details - Wide Pocket Captive Glazing
- 3.7.6 Glazing details - Wide Pocket and ECO123 Glazing Adaptor
- 3.7.7 Glazing details - Wide Pocket and HE430 Glazing Adaptor

4.0 CARE AND MAINTENANCE

HUNTER
EVO

ALSPEC ALUMINIUM SYSTEMS

TECHNICAL MANUAL

HUNTER EVO 150mm DG FLUSH GLAZED

Section 1.0

TECHNICAL MANUAL RELEASE NOTES

This page is intended to record all changes to the **HUNTER EVO 150mm DG FLUSH GLAZED FRAMING** technical manual pages. It is therefore critical that all changes are recorded in the below AMENDMENTS box prior to release to our customers.

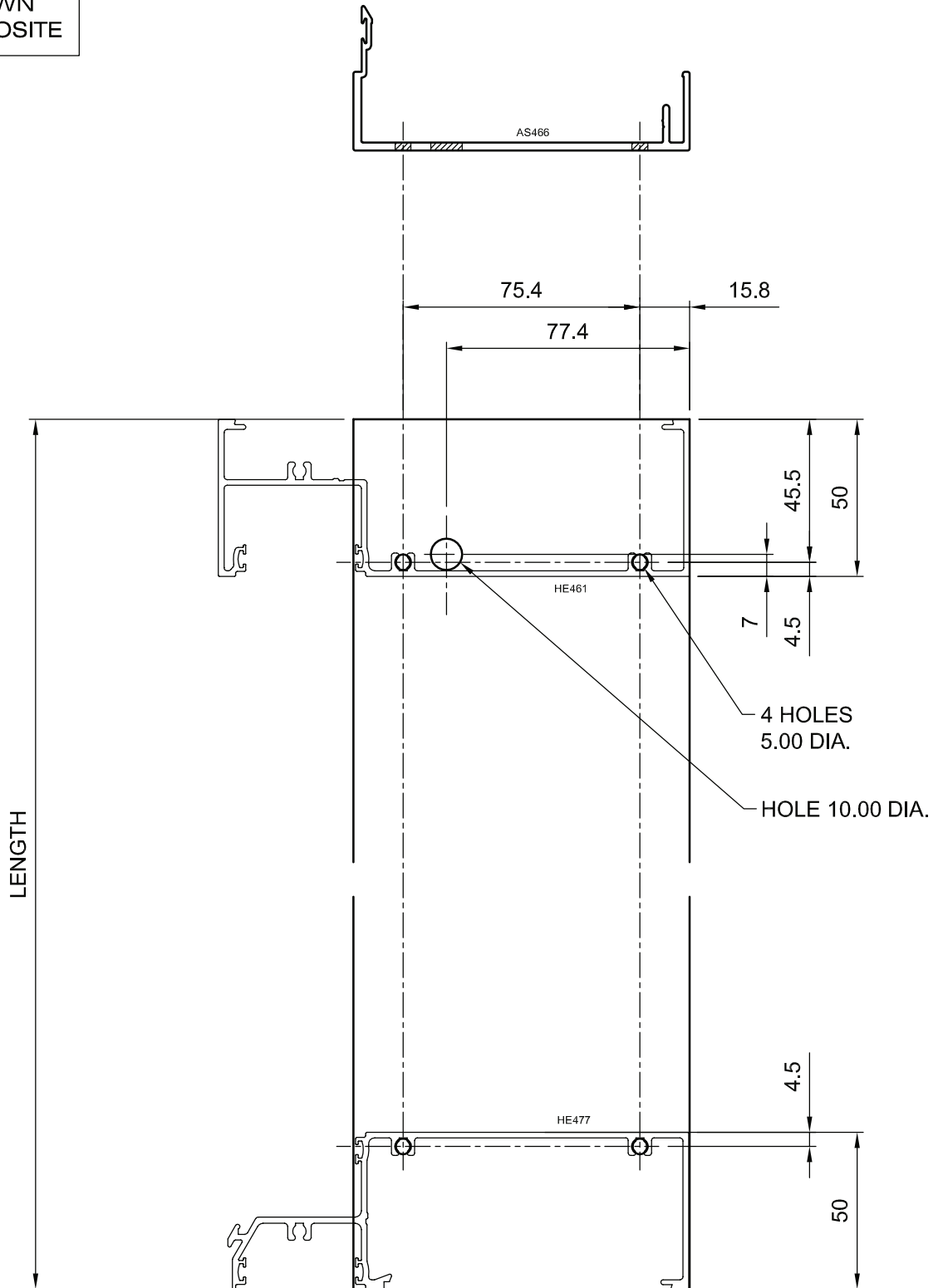
Changes or additions to this manual will be itemised with a brief description and date when the amendments were made.

It is important that a copy of the page be issued with the update and inserted as the first page in the customer's technical manual.

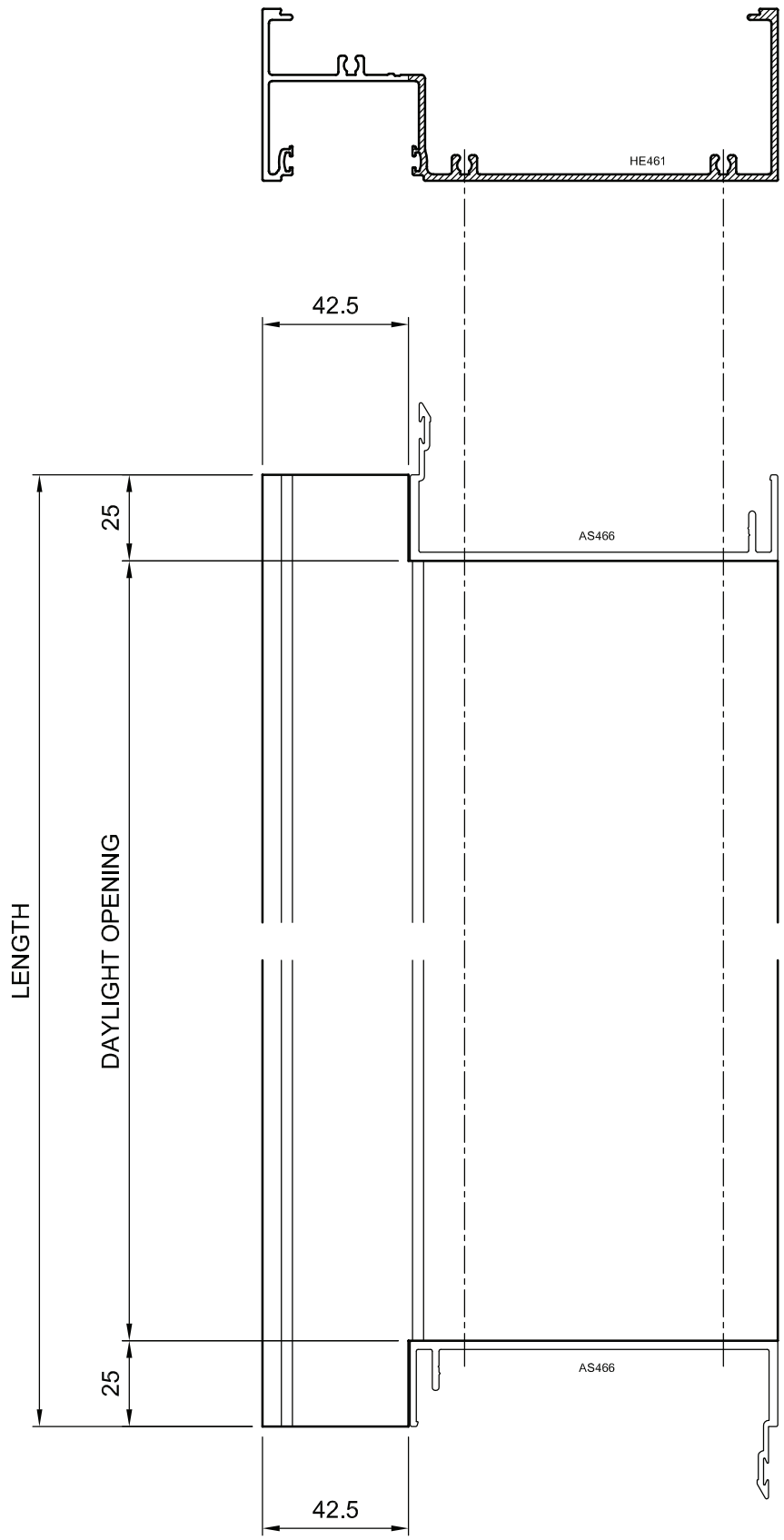
DATE	AMENDMENT DESCRIPTION	REMOVE PAGE	INSERT NEW PAGE
01 / 04 / 2013	Technical manual initial release	~	~
01 / 10 / 2014	Manual reference number	Cover	Cover
01 / 10 / 2014	Tech manual release notes	1.0	1.0
01 / 10 / 2014	Transom load tables	2.2.7, 2.2.9 - 2.2.13	2.2.7, 2.2.9 - 2.2.13
01 / 10 / 2014	Accessories	3.2.2 - 3.2.4	3.2.2 - 3.2.4
01 / 10 / 2014	Details page	3.4.1 & 3.4.4	3.4.1 & 3.4.4
01 / 10 / 2014	Glazing Details	3.7.5	3.7.5
01 / 08 / 2015	Loading tables & extrusions contents page updated	~	~
01 / 08 / 2015	Tech manual release notes updated	1.0	1.0
01 / 08 / 2015	Specification page amended	2.1	2.1
01 / 08 / 2015	Loading table page added	~	2.2.14
01 / 08 / 2015	Extrusion page amended	3.1.2 & 3.1.8	3.1.2 & 3.1.8
01 / 08 / 2015	Extrusion page added	~	3.1.14
01 / 08 / 2015	Manufacturing drawings updated	3.6.4, 3.6.5, 3.6.9, 3.6.10, 3.6.14, 3.6.15, 3.6.19, 3.6.20	3.6.4, 3.6.5, 3.6.9, 3.6.10, 3.6.14, 3.6.15, 3.6.19, 3.6.20
01 / 08 / 2015	Contact page updated	Last Page	Last Page
01 / 11 / 2016	Contents page updated (Extrusions)	~	~
01 / 11 / 2016	Tech manual release notes	1.0	1.0
01 / 11 / 2016	Extrusion pages updated	3.1.8, 3.1.12 - 3.1.14	3.1.8, 3.1.12 - 3.1.14
01 / 11 / 2016	Extrusion pages added	3.1.15 - 3.1.19	3.1.15 - 3.1.19
01 / 02 / 2017	Contents page amended	~	~
01 / 02 / 2017	Tech manual release notes amended	1.0	1.0
01 / 02 / 2017	Manufacturing pages added	~	3.6.25 - 3.6.32

STRUCTURAL MULLION PREPARATION

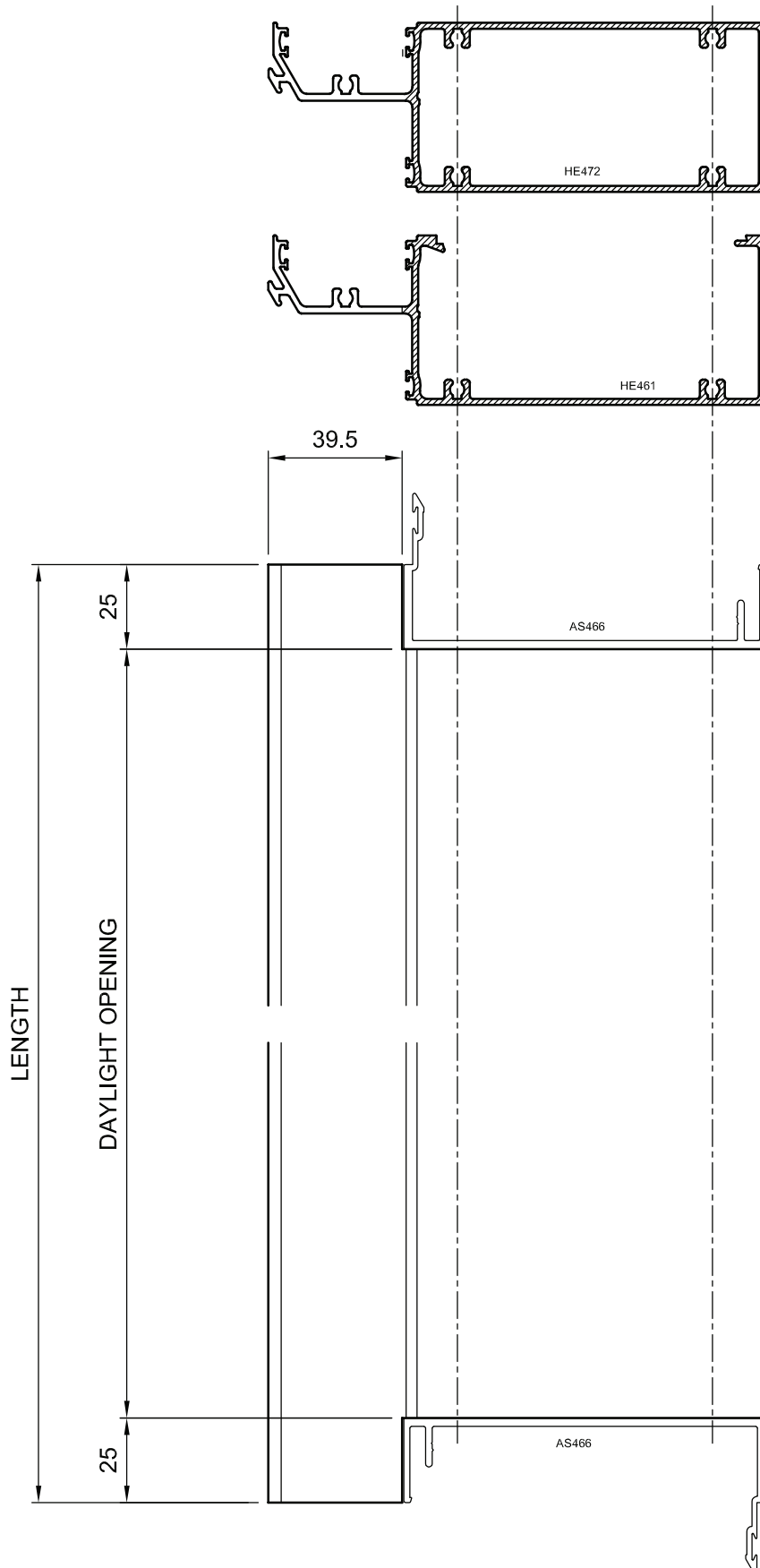
L.H. DRAWN
R.H. OPPOSITE



FRAME PREPARATION - HEAD WITH STRUCTURAL MULLIONS

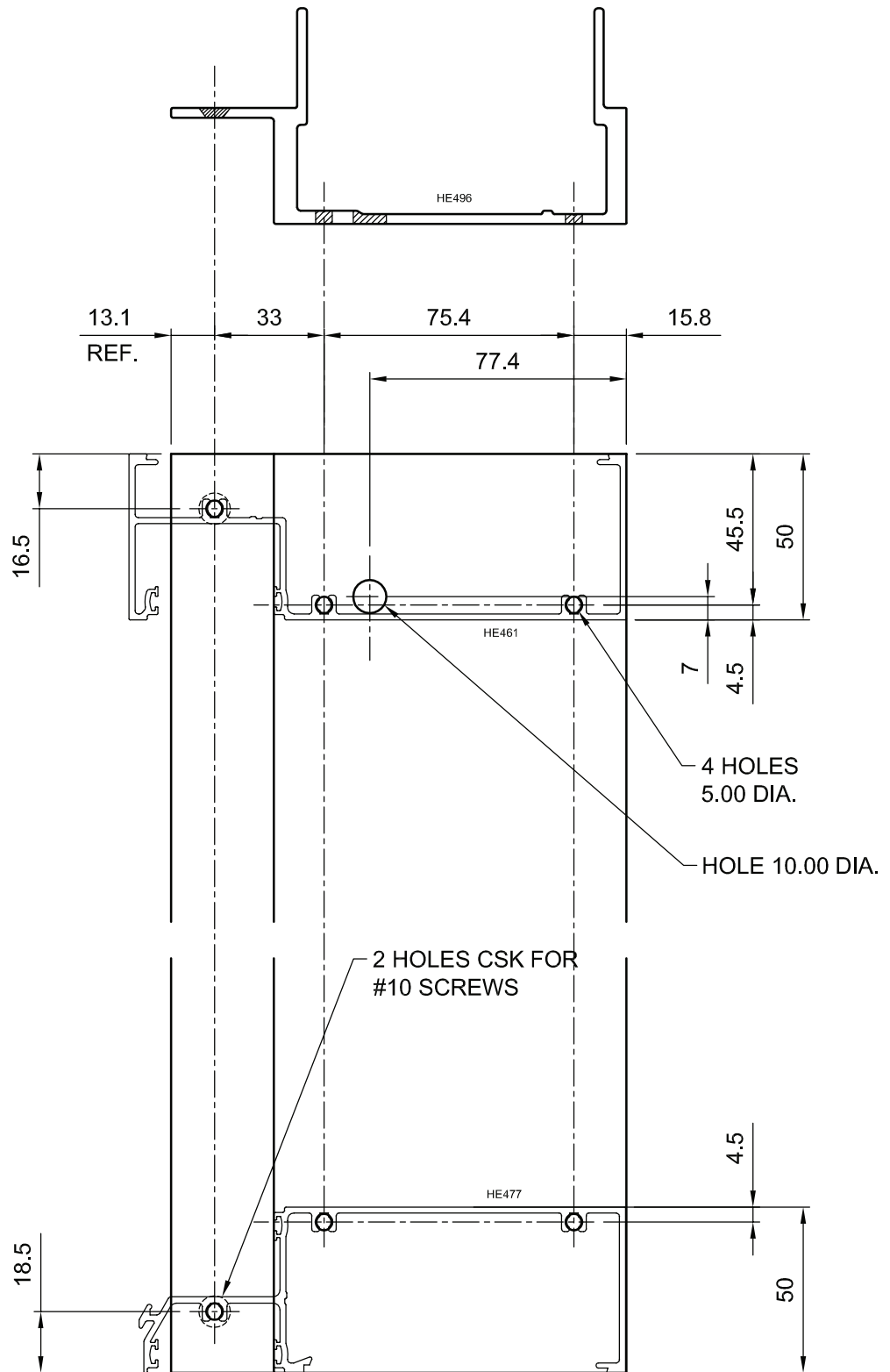


TRANSOM PREPARATION



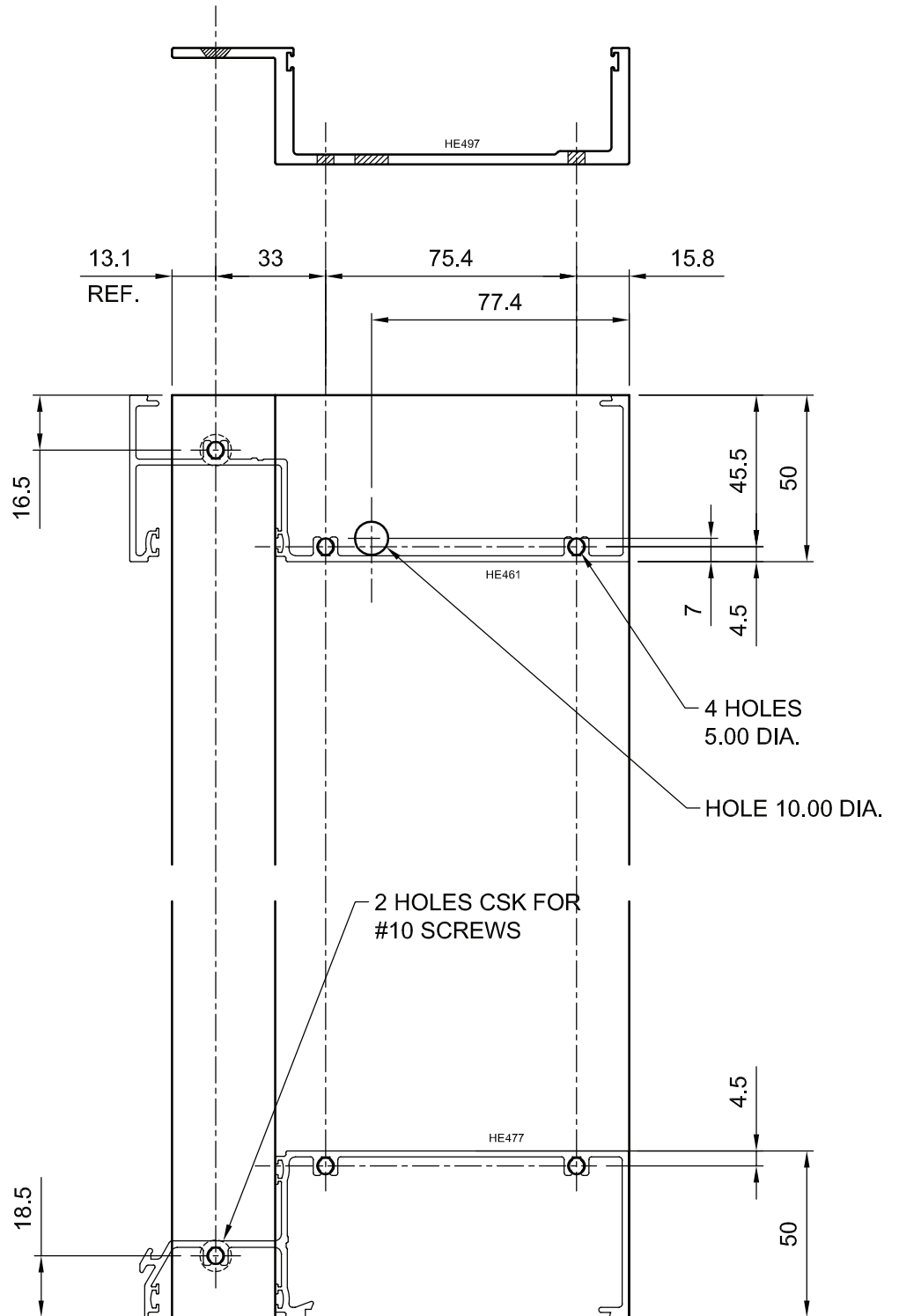
TYPICAL DG MALE STRUCTURAL MULLION PREPARATION

L.H. DRAWN
R.H. OPPOSITE

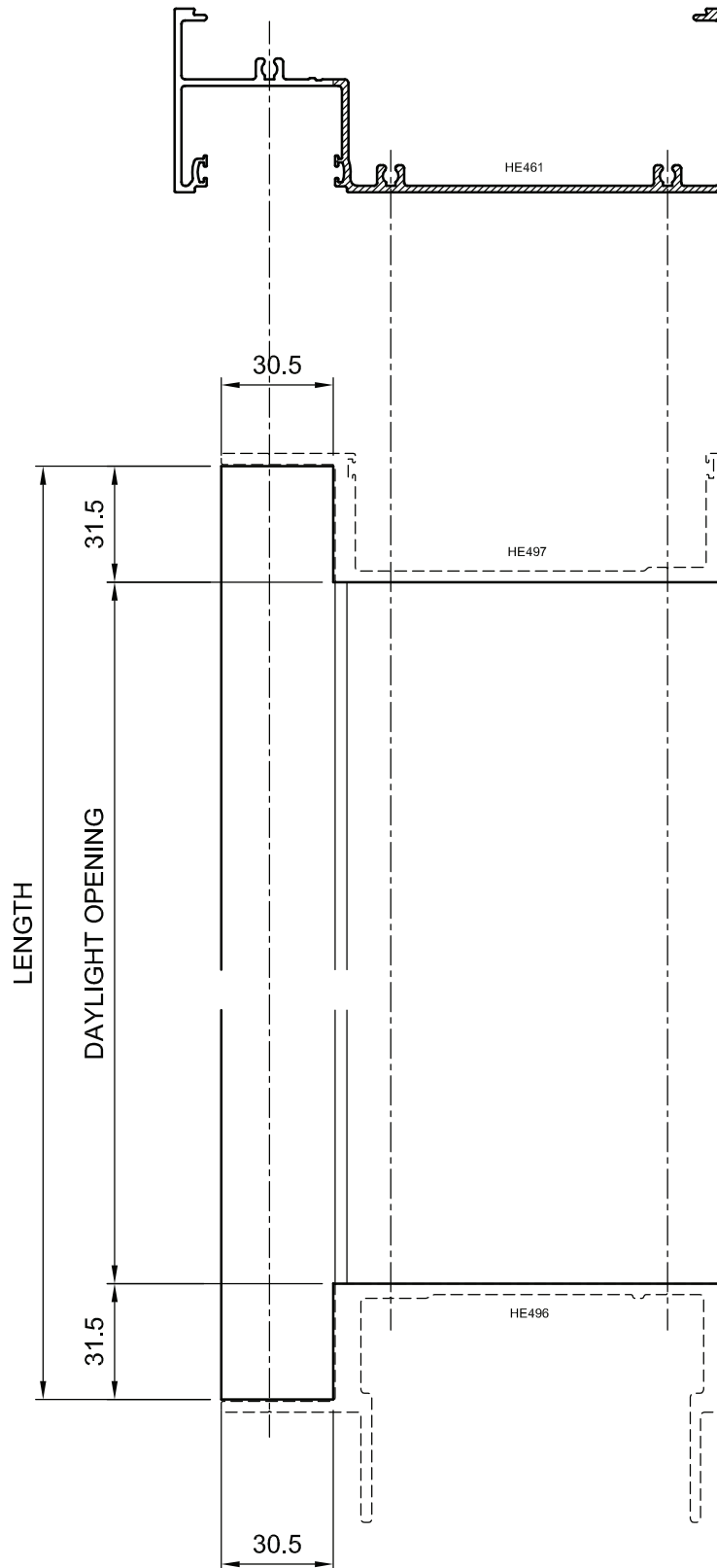


TYPICAL DG FEMALE STRUCTURAL MULLION PREPARATION

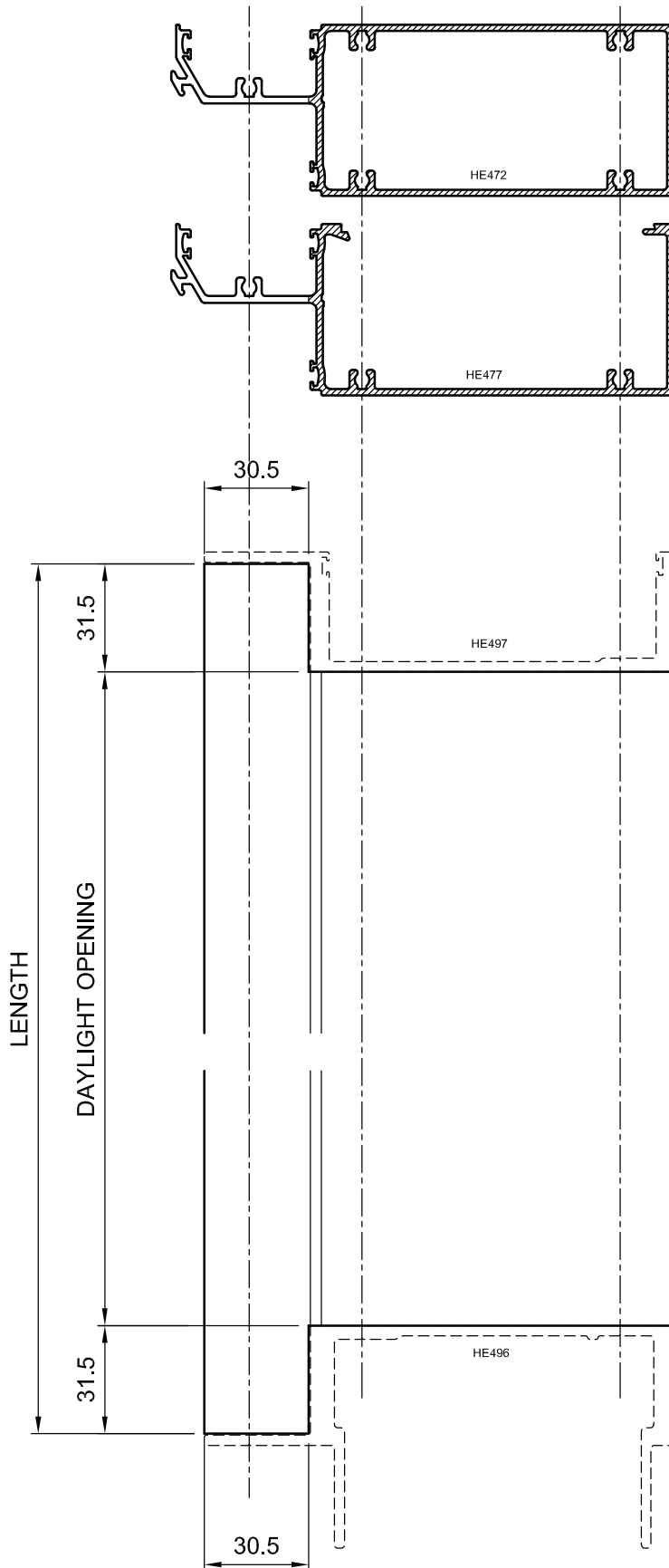
L.H. DRAWN
R.H. OPPOSITE



FRAME PREPARATION - HEAD WITH DG STRUCTURAL MULLIONS



TRANSOM PREPARATION - WITH DG STRUCTURAL MULLIONS



SILL PREPARATION - WITH DG STRUCTURAL MULLIONS

